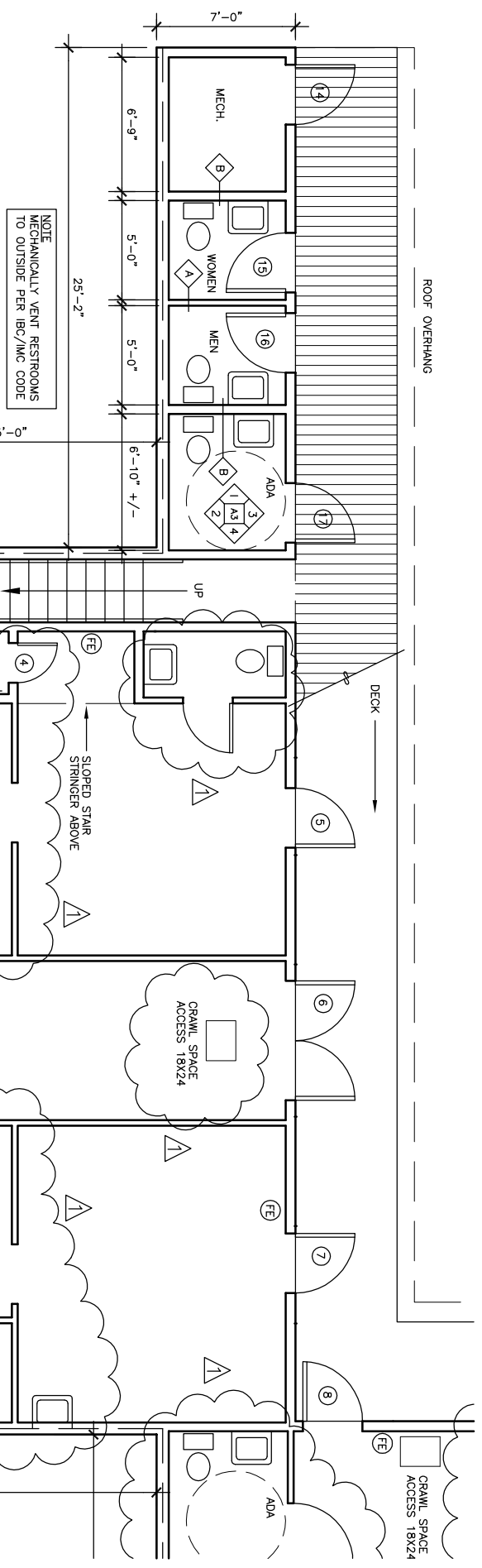


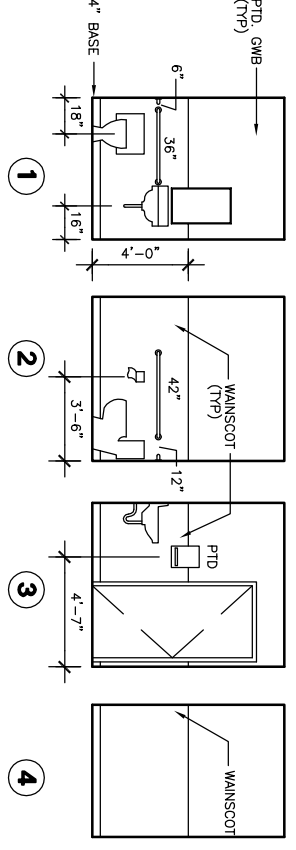
ROOF OVERHANG



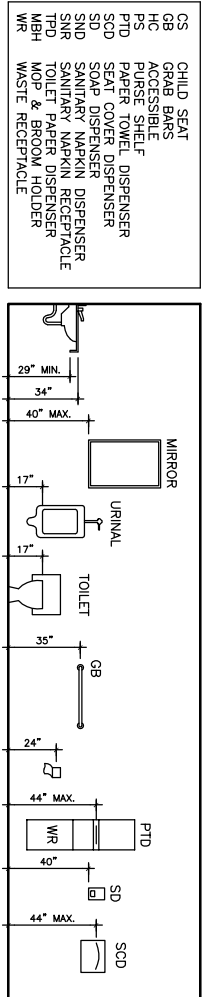
NOTE
MECHANICALLY VENT RESTROOMS
TO OUTSIDE PER IBC/MC CODE

Interior Elevations SC: 1/4" = 1'-0"

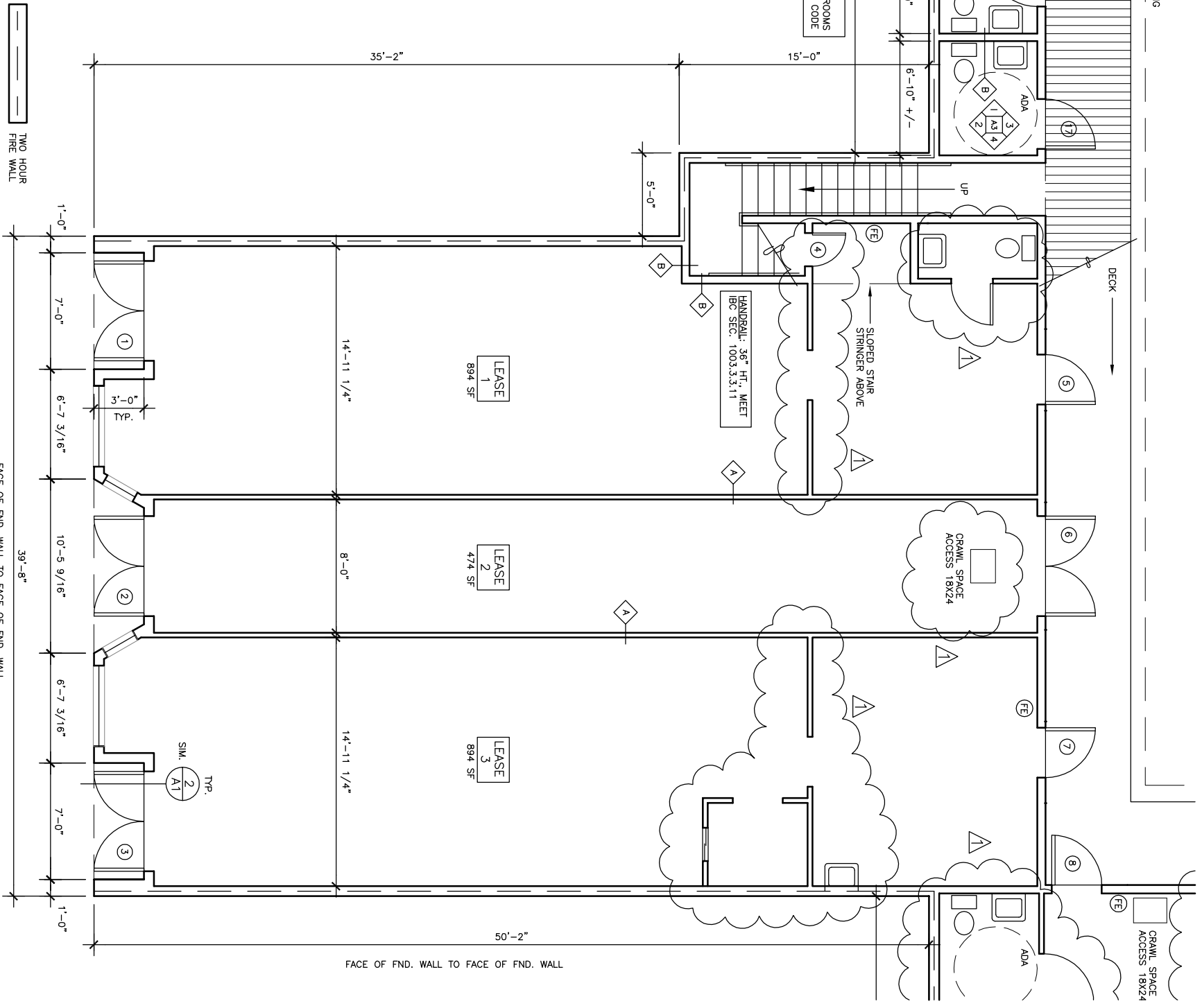
ADA RESTROOM



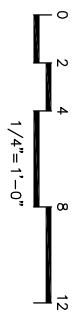
Fixture Heights For Accessibility



- FIGURE ABBREVIATIONS
- CS CHILD SEAT
 - GB GROUND BASE
 - HD ACCESSIBLE
 - PS PURSE SHELF
 - PTD PAPER TOWEL DISPENSER
 - SOD SOAP DISPENSER
 - SND SANITARY NAPKIN DISPENSER
 - SMR SANITARY MOP & BROOM HOLDER
 - TRH TISSUE RECEPTACLE
 - WR WASTE RECEPTACLE

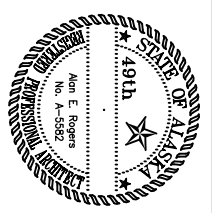


PHASE 1 -- 1ST FLR. PLAN
SCALE: 1/4" = 1'-0"



A.E. Rogers
ARCHITECTS, L.L.C.

P.O. Box 34401 • Juneau, Alaska 99803
Tele 907.789.7589 Fax 907.789.1638



AK Fire Marshal Review No. 2004-0057

CONSTRUCTION DOCUMENTS
SKAGWAY BAZAAR BUILDING

6th Avenue & Broadway
Skagway, Alaska 99840

REVISION NO. 1 NOTES:
REVISION NO. 1 CONSISTS OF
DESIGN & CONSTRUCTION CHANGES
TO THE BUILDING BY THE OWNER.

Number	Date	By	Description of Revision
1	7-10-04	OWNER	AS-BUILT

Sheet Title
**ENLARGED
FLOOR PLAN**

Scale AS SHOWN (HALF SCALE AT 11X17)
Designed AER Drawn AER
Date MARCH 18, 2004 Checked AER
Approved By AER Job Number 0314

Sheet Number
A3
OF 11