

Room Finish Schedule

ROOM NO.	ROOM NAME	FLOOR	BASE	WALL				CEILING			REMARKS
				NORTH	SOUTH	EAST	WEST	MAT.	FIN.	HEIGHT	
	MECHANICAL	PLYWD	6" RUB	P2	P2	P2	P2	GWB	P2	VARIES	PAINT PLYWD FLOOR
	WOMEN	SV	6" RUB	P2	P2	P2	P2	GWB	P2	VARIES	
	MEN	SV	6" RUB	P2	P2	P2	P2	GWB	P2	VARIES	
	ADA	SV	6" RUB	P2	P2	P2	P2	GWB	P2	VARIES	
	LEASE 1	PERGO	4" WD	P2	P2	P2	P2	STRUCT	P1	12'-0"	
	LEASE 2	PERGO	4" WD	P2	P2	P2	P2	STRUCT	P1	12'-0"	
	LEASE 3	PERGO	4" WD	P2	P2	P2	P2	STRUCT	P1	12'-0"	
	LEASE 4	PERGO	4" WD	P2	P2	P2	P2	STRUCT	P1	12'-0"	
	LEASE 5	PERGO	4" WD	P2	P2	P2	P2	STRUCT	P1	12'-0"	
	LEASE 6	PERGO	4" WD	P2	P2	P2	P2	STRUCT	P1	12'-0"	
	LEASE 7	PLYWD	6" RUB	P2	P2	P2	P2	STRUCT	P1	10'-0"	PAINT PLYWD FLOOR

Abbreviations

MATERIALS:	FINISHES:
CONC = CONCRETE	FAC = FACTORY FINISH, CLEAN
CT = CERAMIC TILE	P1 = PAINT: FLAT ENAMEL
CPT = CARPET	P2 = PAINT: SEMI-GLOSS ENAMEL
PERGO = PERGO	WF = WALL FABRIC
PLYWD = PLYWOOD	EXIST = EXISTING
QT = QUARRY TILE	M-EXIST = MATCH EXIST. ADJ. SURFACE
RFP = REINF. FIBERGLASS PANEL	
SV = SHEET VINYL	
VT = VINYL TILE	
WD = WOOD	
6" COVE = 6" INTEGRAL SV COVE	
4" RUB = 4" RUBBER BASE	
6" RUB = 6" RUBBER BASE	
4" WB = 4" WOOD BASE	
FIN H = FINISHED HARDBOARD	
GWB = GYPSUM WALLBOARD	
PLAM = PLASTIC LAMINATE	
ACT = SUSPENDED ACOUSTICAL TILE	
STRUCT = EXPOSED STRUCTURE	

Door Schedule

DOOR NO.	SIZE (W X H)	TYPE	RATING	DETAILS			HARDWARE GROUP	REMARKS
				HEAD	JAMB	SILL		
FIRST FLOOR								
1	6'-0" X 8'-0"	A	-	X/AX	X/AX	X/AX	HDW-	DOUBLE DOOR
2	6'-0" X 8'-0"	A	-	X/AX	X/AX	X/AX	HDW-	DOUBLE DOOR
3	6'-0" X 8'-0"	A	-	X/AX	X/AX	X/AX	HDW-	DOUBLE DOOR
4	2'-6'-0" X 6'-8"	C	-	X/AX	X/AX	X/AX	HDW-	INTERIOR DOOR
5	3'-0" X 8'-0"	B	-	X/AX	X/AX	X/AX	HDW-	
6	6'-0" X 8'-0"	A	-	X/AX	X/AX	X/AX	HDW-	DOUBLE DOOR
7	3'-0" X 8'-0"	B	-	X/AX	X/AX	X/AX	HDW-	
8	3'-0" X 8'-0"	B	-	X/AX	X/AX	X/AX	HDW-	
9	6'-0" X 8'-0"	A	-	X/AX	X/AX	X/AX	HDW-	DOUBLE DOOR
10	6'-0" X 8'-0"	A	-	X/AX	X/AX	X/AX	HDW-	DOUBLE DOOR
11	6'-0" X 8'-0"	A	-	X/AX	X/AX	X/AX	HDW-	DOUBLE DOOR
12	3'-0" X 8'-0"	B	-	X/AX	X/AX	X/AX	HDW-	
13	6'-0" X 8'-0"	A	-	X/AX	X/AX	X/AX	HDW-	DOUBLE DOOR
14	3'-0" X 6'-8"	D	-	X/AX	X/AX	X/AX	HDW-	EXTERIOR DOOR
15	3'-0" X 6'-8"	D	-	X/AX	X/AX	X/AX	HDW-	EXTERIOR DOOR
16	3'-0" X 6'-8"	D	-	X/AX	X/AX	X/AX	HDW-	EXTERIOR DOOR
17	3'-0" X 6'-8"	D	-	X/AX	X/AX	X/AX	HDW-	EXTERIOR DOOR
SECOND FLOOR								
18	3'-0" X 6'-8"	D	-	X/AX	X/AX	X/AX	HDW-	EXTERIOR DOOR
19	3'-0" X 6'-8"	D	-	X/AX	X/AX	X/AX	HDW-	EXTERIOR DOOR
20	3'-0" X 6'-8"	D	-	X/AX	X/AX	X/AX	HDW-	EXTERIOR DOOR

WINDOW SCHEDULE

WINDOW MARK	R.O. WIDTH	R.O. HEIGHT	TYPE	CONSTRUCTION	GLAZING	U-VALUE	FIRE RATING (MIN)	REMARKS
A	4'-10-1/2"	5'-11"	DH	WD	CI	0.39	NA	
B	6'-4"	4'-6"	FX	VY	CI	0.39	NA	
C	3'-0"	4'-6"	FX	VY	CI	0.39	NA	

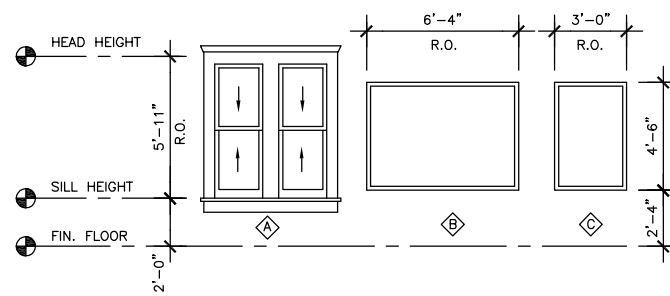
ABBREVIATIONS

CI = CLEAR INSULATED
OI = OBSCURE INSULATED
CT = CLEAR TEMPERED

VY = VINYL
WD = WOOD

FX = FIXED PANE
CS = CASEMENT OPENING
SH = SINGLE HUNG
DH = DOUBLE HUNG
AW = AWNING

NOTE: EGRESS WINDOWS - MIN. NET CLEAR OPENING SIZE = 5.7 SF, 20" W, 24" H

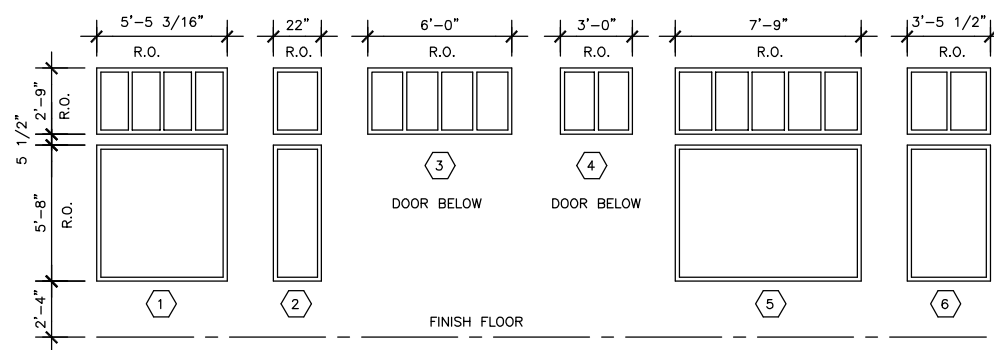


NOTE: STOREFRONT ROUGH OPENING SIZES MUST BE COORD. WITH FINAL STRUCTURAL DRAWINGS BEFORE ORDERING FOR FABRICATION.

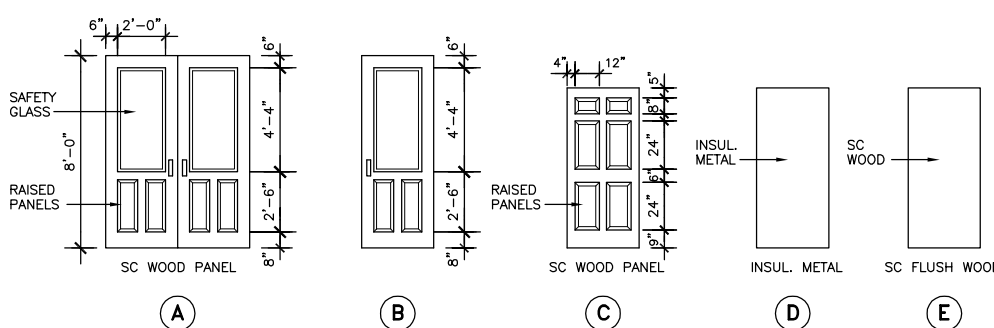
STOREFRONT SCHEDULE

1	FIXED PANE WINDOW W/ TRANSOM
2	FIXED PANE WINDOW W/ TRANSOM
3	FIXED PANE TRANSOM
4	FIXED PANE TRANSOM
5	FIXED PANE TRANSOM W/ WINDOW
6	FIXED PANE TRANSOM W/ TRANSOM

*PROVIDE SAFETY GLASS AS REQUIRED



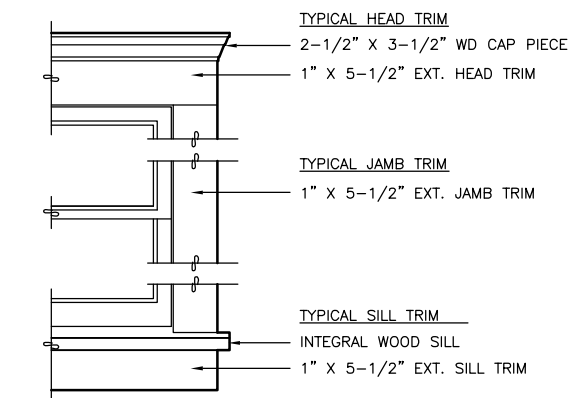
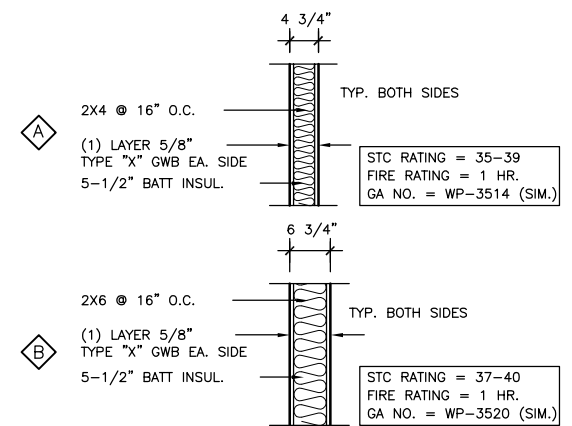
Door Types



WOOD DOORS:
SOLID CORE (SC) (PARTICLEBOARD CORE 5 OR 7 PLY), OAK FACE,
AWI CUSTOM GRADE, SATIN (TRANSPARENT FINISH)
HOLLOW CORE (HC)

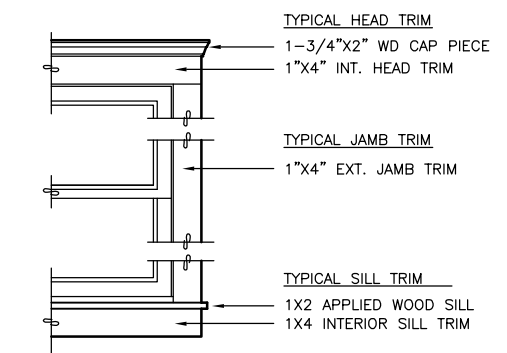
INTERIOR WALL TYPES

SC: 3/4" = 1'-0"



1 EXTERIOR WINDOW TRIM

SCALE: 1" = 1'-0" D:\CAD\0314



2 INTERIOR WINDOW TRIM

SCALE: 1" = 1'-0" D:\CAD\0314



Number	Date	By	Description of Revisions

SCHEDULES

Scale AS SHOWN (HALF SCALE AT 11X17)

Designed AER Drawn AER

Date MARCH 18, 2004 Checked AER

Approved By AER Job Number 0314

Sheet Number

